

# Value Creation Framework

We aim at creating continuous value for all our stakeholders which leads to holistic growth, balanced capital investment and business sustainability across all six capitals.

## Inputs

### Manufactured Capital

Renewable Energy Capacity: 1,174 MW  
 Thermal Capacity: 1,320 MW  
 Transmission Lines: 494 km  
 Initiate actions for Robotics cleaning implementation for PV panels

### Intellectual Capital

Implementation of Oracle eBS  
 Entry in end-to-end Advanced Metering Infrastructure (AMI) solution  
 Investment in Digital Interventions: INR 101.39 million  
 Implementation of Mangement Systems

### Natural Capital

Investment in Renewable Energy Projects: INR 12,783 million  
 Quantity of coal consumed for energy business: 75,442 TJ  
 Water Consumption: 16,019,465 kl  
 Quantity of Biomass used: ~2,000 Metric tonnes  
 Number of Bird Diverters Installed: 89,980

### Human Capital

Number of Employees: 461  
 Employee Training Coverage: 87%  
 Training Manhours per Employee: 51 hours  
 Women Employee: 14.1%  
 New Hires: 81  
 Number of Employees for G•R•O•W• developmental journey (Mid to Senior level): 124

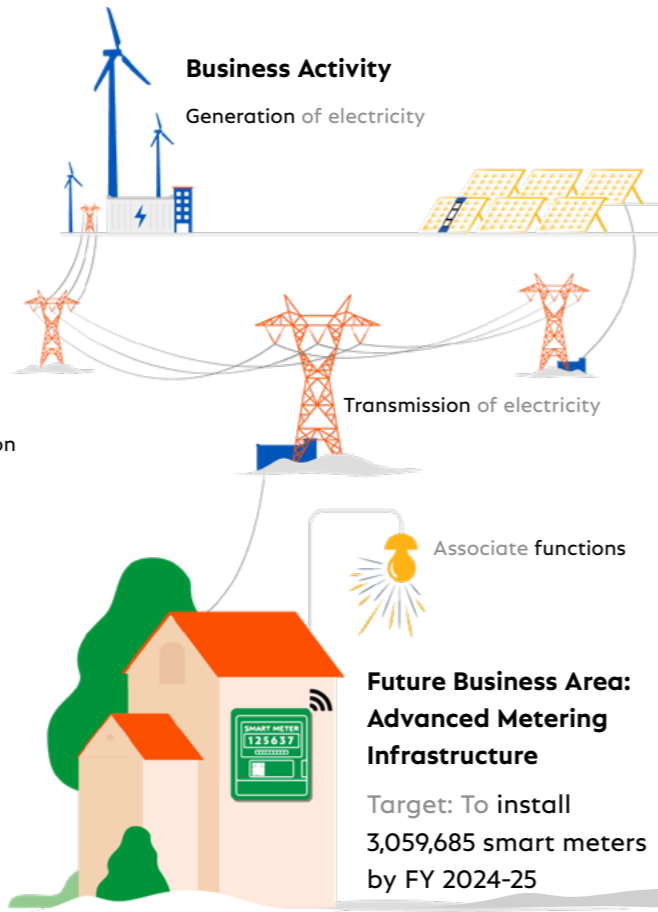
### Social & Relationship Capital

Investment in CSR: INR 111.30 million  
 Employee Volunteering Hours (CY 2022): 1,548  
 Local Non-Fuel Suppliers Count %: 98.07  
 Locally sourced Non-Fuel Spend Value %: 97.73

### Financial Capital

Paid Shared Capital: INR 28,427 million  
 Net Debt: INR 53,654 million  
 Net Worth: INR 93,908 million

## Business Footprint



## Strategic Ambitions

Increased focus on low-carbon growth and ingress to consumer focused business

**Commitment to SBTi :**  
 Reduce Generation-related GHG emissions intensity (Scope 1 & Scope 2) by 46.3% tCO<sub>2</sub>e/MWh by 2027 from a 2022 base year

Positively impact 2 million lives by 2025



Biodiversity Assessment and Natural Ecosystem Development around facilities

## Outputs

### Manufactured Capital

Net Generation Thermal: 7,634.18 GWh  
 Net Generation Renewable: 2,023.29 GWh  
 System Availability: 99.84% (KMTL) & 100% (STPL)  
 Initiated robotic cleaning

### Intellectual Capital

Phase 1 Implementation of Oracle eBS completed in July 2022  
 Won two contracts in Advanced Metering Infrastructure (AMI) at Assam and Gujarat  
 Risk Mitigation, Effective Project Execution and Compliance to Regulations  
 ISO 14001 and 45001 certifications at STPL

### Natural Capital

Single Use Plastic Free certification for JPL  
 Zero Waste to Landfill at JPL  
 Specific Water Consumption: 1.72 kl/MWh  
 GHG Intensity: 0.71 tCO<sub>2</sub>e/MWh  
 Conservation of Biodiversity

### Human Capital

Voluntary Attrition Rate: 11.9%  
 TRIR: 0.00 (Employees) and 2.62 (Contractors)

### Social & Relationship Capital

CSR beneficiaries count: 227,001  
 Number of villages impacted: ~283  
 Priotising youth and women empowerment as a part of integrated village development program.

### Financial Capital

EBITDA Margin: 35.38%  
 Profit After Tax: INR 12,335 million  
 Return on Capital Employed: 12.24%  
 Revenue: INR 62,910 million

## Outcomes

Operational excellence and safety across all facilities

Integrating all user applications on a single platform through digital transformation

Efficient waste management and reduction in GHG emissions

Safe, secure and happy workplace that supports professional and personal growth of employees

Greater community engagement and generating avenues for sustainable livelihoods

Cost agility, productivity and profitability

## Strategic Focus Areas

Progressing from water intensive to low water operations

Develop customer facing energy solutions

Long-term climate vision and associated actions

Workforce skilled for futuristic roles and technologies

Building resilient communities

Investment aligned with national agenda for low carbon growth