

## JOB DESCRIPTION

<b>Position Title</b>	Assistant/Deputy Manager - HSSE (Renewables)
<b>Superior Position Title</b>	General Manager - HSSE (Renewables)
<b>Company/ Business Unit</b>	Apraava Wind Energy (Khandke) Private Limited
<b>Division / Department</b>	HSSE
<b>Location</b>	Wind site

### 1. JOB PURPOSE

**Business Context:** Apraava Energy a 50:50 joint venture between CLP group, one of the largest investor-owned power business in Asia and Caisse de dépôt et placement du Québec (CDPQ), one of Canada's leading institutional fund managers. Apraava Energy has a diversified and environment-friendly power generation portfolio of ~3000 equity MW comprising both Conventional (~2000 MW) and Renewable (~1200 MW) assets.

Apraava Energy was one of the first companies to identify the potential of renewable energy in India. The company entered this space by building its first wind farm in 2009. Since then Apraava Energy has gradually grown its wind energy portfolio and is now spread across six states generating nearly 1,000 MW and another 250 MW of committed capacity. Wind energy has been an integral part of Apraava Energy's business strategy. It is expected to continue making a vital contribution not only to CLP's growth plans for India but also to its commitment towards reducing its CO2 emissions.

Apraava Energy forayed into solar power generation with a 100 MW plant in 2016 through a joint venture in Veltoor, Telangana. Apraava Energy acquired two more solar plants in 2018. In 2020, Apraava Energy increased the size of its solar energy portfolio by more than 70% by entering into an agreement to acquire three of its solar projects.

In line with Apraava Energy's vision of investing in a low-carbon and clean energy portfolio, Apraava Energy marked its entry into the power transmission sector in 2019 with the acquisition of 240 km transmission line. With this, Apraava Energy has broadened its portfolio to straddle two out of the three main segments in India's power value chain.

The company has also built a 1,320 MW supercritical coal-fired power plant in Jhajjar, Haryana. The Jhajjar Power Plant has been commercially operational since mid-2012. It is one of the first few power plants in India to operationalize the Flue Gas Desulphurization (FGD) unit which helps reduce ~ 85% of SO2 emissions.

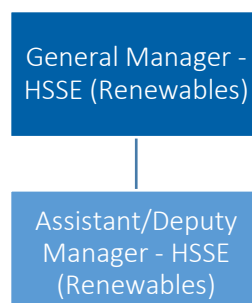
The plant has also won the Frost & Sullivan and TERI Jury Special Mention Award in 2019 for reducing its specific water consumption to 2.11 m<sup>3</sup>/ MWh against a statutory limit of 3.5 m<sup>3</sup>/ MWh.

The Organization is engaged in Greenfield development of Power Generation/Transmission assets as well as their Acquisition. The business objectives in either case can be met only if the asset performs to the business assumptions. Engineering plays a key role in translating that business assumptions into engineering designs which can make sure that business objectives are met sustainably.

The organization is further diversifying into Power distribution business including Advanced Metering business. This would uniquely position organization's presence across the entire power sector value chain.

Management System)at the assets in the assigned region in compliance with the Apraava Energy HSSE policy and local statutory norms.

### 2. ORGANISATIONAL CHART



### 3. PRINCIPAL ACCOUNTABILITIES

Accountabilities	Major Activities
<p>Support in the formulation of Renewable assets' HSSE strategy, guidelines and procedures in line with overall Apraava Energy's policies and monitor adherence to the same to drive a strong HSSE culture and maintain a high NOSA rating</p>	<ul style="list-style-type: none"> <li>▪ Partake in the development/modification of Renewables HSSE guidelines &amp; procedures in line with overall Apraava Energy policies and regional HSSE regulations by providing required inputs to the Head – HSSE (RE)</li> <li>▪ Draft weekly, monthly and annual HSSE statistics reports for the overseen regional assets detailing all safety incidents basis data from employees, O&amp;M and OEM contractors and sub-contractors and communicate the same to employees at respective assets as well as the Apraava Energy</li> <li>▪ Actively participate in Health , Safety &amp; Environment data verifications ,IMS and other audits by third party</li> <li>▪ Drive regular updates of assets data in the HSSE management system</li> <li>▪ Monitor roll out of HSSE audit plan and follow up on audit recommendations implementation by the asset teams/ OEMs</li> <li>▪ Analyze risk assessments by various assets taking corrective action/escalating the issue if required</li> <li>▪ Coordinate with the P&amp;I team to ensure timely availability of quality safety equipment/services in line with Apraava Energy's standards; support the vendor selection and qualification process assessing the vendors for their performance in line with HSSE guidelines</li> </ul>
<p>Drive implementation of HSSE processes to help elevate regional asset HSSE performance to world best standards</p>	<ul style="list-style-type: none"> <li>▪ Support <b>Head-HSSE (RE)</b> to ensure safety across all renewables assets of Apraava Energy.</li> <li>▪ Drive implementation of the ISO Integrated Management System at the assets ensuring 100% participation of employees, contractors and working parties</li> <li>▪ Support a HSSE adherence culture at renewable sites to minimize safety incidents by driving enhanced quality of work through safety compliant processes and conducting regular safety training programs/events</li> <li>▪ Develop and deliver introductory site/job specific HSSE induction modules to staff, workmen, contractors and sub-contractors</li> <li>▪ Periodically conduct safety meetings, toolbox talks, observe safety day, environment day, fire day etc. to spread awareness regarding basic safety procedures, probable safety incidences and Apraava Energy HSSE standards, guidelines, and procedures</li> <li>▪ Ensure presence on asset site to monitor adherence to Apraava Energy Group HSSE guidelines and apprise supervisor about safety incidents on a regular basis</li> <li>▪ Train employees on Environment and Waste management providing guidance for timely issue resolution</li> <li>▪ Train site staff for implementation of ISO 9001,14001&amp; 45001 standards at site</li> <li>▪ Conduct regular audit for monthly PTW , Internal IMS &amp; Renewsafe audit with Asset manager and OEM</li> <li>▪ Conduct AP CP refresher training and other safety trainings at regular intervals</li> </ul>
<p>Build and maintain mutually beneficial relationships with all key stakeholders within the limits of organizational guidelines and policies to help promote Apraava Energy's image as a HSSE conscious organization</p>	<ul style="list-style-type: none"> <li>▪ Develop strong relationships with safety equipment vendors/suppliers to help secure favorable deals for Apraava Energy</li> <li>▪ Interface with factory inspectorates for statutory compliances, policy formulations etc. to ensure Apraava Energy's interests are not damaged by the same</li> <li>▪ Deepen SPP culture at all site keeping strong bond with OEM</li> </ul>

#### 4. MAJOR CHALLENGES

- |   |
|---|
| <ul style="list-style-type: none"> <li>No definite plant boundary for Renewable assets</li> </ul>       |
| <ul style="list-style-type: none"> <li>Lack of consideration to safety among India personnel</li> </ul> |

#### 5. DECISIONS

##### Decisions made by job holder

- |  |
|--|
| As per the defined authority matrix                      |
| Approvals within the budgets defined and decision matrix |

#### 6. INTERACTIONS

##### Internal Clients

- |  |
|--|
| <b>Roles you need to interact with inside the organization to enable success in your day to day work</b>                 |
| Regional Asset Operations Team– spread awareness regarding station HSSE standards and practices; seek compliance support |
| P&I Team, Mumbai – support in timely procurement of quality safety equipment/services                                    |

##### External Clients

- |   |
|---|
| <b>Roles you need to interact with outside the organization to enable success in your day to day work</b> |
| Factory Inspector – Statutory compliance  |
| External Auditors – audit HSSE regulation compliance  |
| OEM Vendors – Contracting terms; support for observing HSSE norms   |
| O& M Contractor’s staff – support for observing HSSE norms  |
| Near by villagers / Land looser   |

#### 7. SKILLS AND KNOWLEDGE

##### Educational Qualifications

- |   |
|---|
| <ul style="list-style-type: none"> <li>Mandatory Qualification: Bachelor Degree in Science / Arts</li> <li>PG Diploma in Industrial Safety preferred</li> </ul> |
|---|

##### Functional Skills

- |   |
|---|
| <ul style="list-style-type: none"> <li>Knowledge on world best HSSE practices &amp; procedures</li> <li>The Factories Act and other applicable statutes</li> <li>Basic understanding of the functioning of Renewables Power Plants</li> <li>Knowledge of construction safety</li> <li>Planning and analytical skills, ability to take a long-term perspective</li> <li>People Management and Interpersonal skills</li> <li>Networking skills</li> <li>Team work</li> <li>Leadership skills</li> <li>Influencing/Negotiation skills</li> </ul> |
|---|

##### Relevant and total years of Experience

- |  |
|--|
| <ul style="list-style-type: none"> <li>Overall experience: 2-5 years as a safety professional</li> </ul> |
|--|