

JOB DESCRIPTION

Position Title	Site Data Analyst
Level	Engineer
Superior Position Title	State AMI Operations Lead
Company/ Business Unit	Apraava Energy Private Limited
Division / Department	AMI Business
Location	AMI Site

1. JOB PURPOSE

Business Context: Apraava Energy is a diversified power company, jointly owned by the CLP Group - one of the largest investor-owned power businesses in Asia and Caissede dépôt placement du Québec (CDPQ) - a global investment group.

Our portfolio comprises 3,150 MW of installed capacity which includes 924 MW of wind and 250 MW of solar energy projects across seven states, a 1320 MW coal-fired super critical power plant and two power transmission assets. We forayed into Advanced Metering Infrastructure (AMI) by winning the first project in Assam to install smart meters in 693,077 households.

The name Apraava Energy has been derived from the Sanskrit language and is an amalgamation of four elements: Agni (Fire), Prithvi (Earth), Ambu (Water) and Vayu (Wind).

Apraava Energy was one of the first company to identify the potential of renewable energy in India. The company entered this space by building its first wind farm in 2009. Since then, Apraava Energy has gradually grown its wind energy portfolio and is now spread across six states generating nearly 1,000 MW and another 250 MW of committed capacity. Wind energy has been an integral part of Apraava Energy's business strategy. It is expected to continue making a vital contribution not only to Apraava Energy's growth plans for India but also to its commitment towards reducing its CO2 emissions.

Apraava Energy forayed into solar power generation with a 100 MW plant in 2016 through a joint venture in Veltoor, Telangana. Apraava Energy acquired two more solar plants in 2018. In 2020, Apraava Energy increased the size of its solar energy portfolio by more than 70% by entering into an agreement to acquire three of its solar projects. The latest addition to Apraava's solar portfolio was a 250 MW solar farm in Dedasari, Rajasthan in 2021.

In line with Apraava Energy's vision of investing in a low-carbon and clean energy portfolio, Apraava Energy marked its entry into the power transmission sector in 2019 with the acquisition of 240 km transmission line. With this, Apraava Energy has broadened its portfolio to straddle two out of the three main segments in India's power value chain. In December 2021 Apraava Energy acquired a 254 km Transmission line from Kalpataru-Mariani Transmission Limited passing through 3 states in North- East India i.e. Manipur, Nagaland and Assam.

The company has also built a 1,320 MW supercritical coal-fired power plant in Jhajjar, Haryana. The Jhajjar Power Plant has been commercially operational since mid-2012. It is one of the first few power plants in India to operationalize the Flue Gas Desulphurization (FGD) unit which helps reduce ~ 85% of SO2 emissions. The plant has also won the Frost & Sullivan and TERI Jury Special Mention Award in 2019 for reducing its specific water consumption to 2.11 m³/ MWh against a statutory limit of 3.5 m³/ MWh.

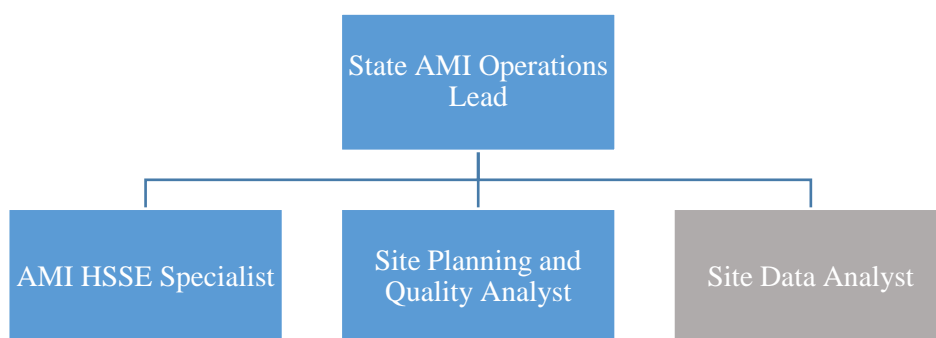
The Organization is engaged in Greenfield development of Power Generation/Transmission assets as well as their Acquisition. The business objectives in either case can be met only if the asset performs to the business assumptions.

Engineering plays a key role in translating that business assumptions into engineering designs which can make sure that business objectives are met sustainably.

The organization is further diversifying into Power distribution business including Advanced Metering business. This would uniquely position organization’s presence across the entire power sector value chain.

Job Purpose: This position is responsible for implementation and O&M of AMI business in the state.

2. ORGANISATIONAL CHART



3. PRINCIPAL ACCOUNTABILITIES

Accountabilities	Major Activities
Overall responsibility for AMI business in the state including implementation, O&M and Revenue/ Cash.	<ul style="list-style-type: none"> ▪ To manage relationship with key stakeholders of DISCOM directly impacting Smart Meter rollout in State.
	<ul style="list-style-type: none"> ▪ Discussions with DISCOM for review and approval of design documents and Project Implementation Plan. ▪ Providing support to DISCOM on AMI Application processes. ▪ Preparation of AMI Applications for functionality testing ▪ Closure of punch points for timely completion of Go Live
	<ul style="list-style-type: none"> ▪ Availability and Operationalization of on-line dashboard for all AMI activities e.g. Meter SCM, Warehouse, CI, MI, Data in HES, Data in MDM
	<ul style="list-style-type: none"> ▪ Daily gap analysis and resolution of unavailability of meter data to ensure SLA compliance
	<ul style="list-style-type: none"> ▪ Daily monitoring & reporting of field progress (team mobilization, meter installation, old meter hand over, meter reporting in HES).
	<ul style="list-style-type: none"> ▪ Implement and monitor HSSE guidelines and periodic audit along with HSSE team.
	<ul style="list-style-type: none"> ▪ Coordination of Consumer Awareness activities at site with DISCOM and PR team.
	<ul style="list-style-type: none"> ▪ To ensure continuity of overall operation of AMI in State inline to SLA requirement.
	<ul style="list-style-type: none"> ▪ Ensure full compliance to AMI SOPs and exhibit zero tolerance to malpractices in line with Apraava Code of Conduct directly and with project partners.
	<ul style="list-style-type: none"> ▪ Monthly SLA report validation and invoice submission to DISCOM.

4. INTERACTIONS

Internal Clients

Roles you need to interact with inside the organization to enable success in your day-to-day work
Finance Team – DISCOM Invoicing, Cash Collections, Partner Payments
Legal Team – Contract Agreements, Contractual Notices, Notice Responses
HR Team – Recruitment
IT Team – Cyber Security Audits

External Clients

Roles you need to interact with outside the organization to enable success in your day-to-day work
DISCOM – Project reviews, Operational Go Live, SLA sign-off, Monthly Payments
IT and Smart Meter Partners – Project deployment governance
Consultants - Cyber Security Audits

5. SKILLS AND KNOWLEDGE

Educational Qualifications

<ul style="list-style-type: none"> ▪ Minimum Qualification: Engineering Graduate

Functional Skills

<ul style="list-style-type: none"> ▪ Exposure to Energy Distribution Utilities (AMI / AMR Projects would be added advantage)

Relevant and total years of Experience

<ul style="list-style-type: none"> ▪ 4+ years
--