

JOB DESCRIPTION

Position Title	Communication Specialist
Superior Position Title	Head AMI Operations
Company/ Business Unit	Apraava Energy
Division / Department	AMI Business
Location	Delhi

1. JOB PURPOSE

Business Context: Apraava Energy a 50:50 joint venture between CLP group, one of the largest investor-owned power business in Asia and Caisse de dépôt et placement du Québec (CDPQ), one of Canada's leading institutional fund managers. Apraava Energy has a diversified and environment-friendly power generation portfolio of ~3000 equity MW comprising both Conventional (~2000 MW) and Renewable (~1200 MW) assets.

Apraava Energy was one of the first companies to identify the potential of renewable energy in India. The company entered this space by building its first wind farm in 2009. Since then Apraava Energy has gradually grown its wind energy portfolio and is now spread across six states generating nearly 1,000 MW and another 250 MW of committed capacity. Wind energy has been an integral part of Apraava Energy's business strategy. It is expected to continue making a vital contribution not only to CLP's growth plans for India but also to its commitment towards reducing its CO2 emissions.

Apraava Energy forayed into solar power generation with a 100 MW plant in 2016 through a joint venture in Veltoor, Telangana. Apraava Energy acquired two more solar plants in 2018. In 2020, Apraava Energy increased the size of its solar energy portfolio by more than 70% by entering into an agreement to acquire three of its solar projects.

In line with Apraava Energy's vision of investing in a low-carbon and clean energy portfolio, Apraava Energy marked its entry into the power transmission sector in 2019 with the acquisition of 240 km transmission line. With this, Apraava Energy has broadened its portfolio to straddle two out of the three main segments in India's power value chain.

The company has also built a 1,320 MW supercritical coal-fired power plant in Jhajjar, Haryana. The Jhajjar Power Plant has been commercially operational since mid-2012. It is one of the first few power plants in India to operationalize the Flue Gas Desulphurization (FGD) unit which helps reduce ~ 85% of SO2 emissions.

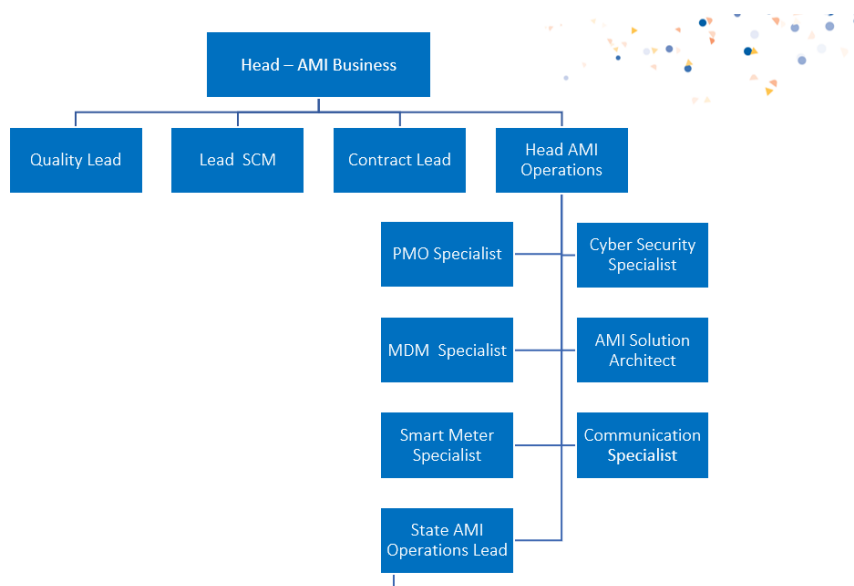
The plant has also won the Frost & Sullivan and TERI Jury Special Mention Award in 2019 for reducing its specific water consumption to 2.11 m³/ MWh against a statutory limit of 3.5 m³/ MWh.

The Organization is engaged in Greenfield development of Power Generation/Transmission assets as well as their Acquisition. The business objectives in either case can be met only if the asset performs to the business assumptions. Engineering plays a key role in translating that business assumptions into engineering designs which can make sure that business objectives are met sustainably.

The organization is further diversifying into Power distribution business including Advanced Metering business. This would uniquely position organization's presence across the entire power sector value chain.

Job Purpose: This position would be Heading Communication (RF Mesh / Cellular) deployment for AMI projects during implementation and O&M phases. Provide technical support to Site Managers.

2. ORGANISATIONAL CHART



3. PRINCIPAL ACCOUNTABILITIES

Accountabilities	Major Activities
Heading Communication (RF Mesh / Cellular) deployment for AMI projects during implementation and O&M phases. Provide technical support to Site Managers.	<ul style="list-style-type: none"> Responsible for implementation of all types of Communications system e.g. RF Mesh and Cellular for successful AMI projects.
	<ul style="list-style-type: none"> Review and Finalization of RF Mesh Network Planning and optimization in line with operational needs.
	<ul style="list-style-type: none"> Review Consumer Indexing data for ensuring compliance to the RF signal requirement for most effective Meter / Gateway placement.
	<ul style="list-style-type: none"> Development and deployment of Network Management System (NMS) in line with operational needs.
	<ul style="list-style-type: none"> Inspection of Network Interface Module (NIC) including Antenna pre-dispatch in line with specification requirement.
	<ul style="list-style-type: none"> Day to day monitoring and coordination with System Integrator for resolution of Communication related SLA gaps.
	<ul style="list-style-type: none"> Analyze NIC module failures, complete root cause analysis (RCA) and suggest the modifications.

4. INTERACTIONS

Internal Clients

Roles you need to interact with inside the organization to enable success in your day to day work
AMI Team – AMI Operations Head and PMO
Site Team – Site Operations Lead
Quality Manager

External Clients

Roles you need to interact with outside the organization to enable success in your day to day work
--

DISCOM – Project reviews, SLA sign-off, Monthly Payments
--

System Integrator – Project deployment governance

Consultants – Network Planning & Optimization

5. SKILLS AND KNOWLEDGE

Educational Qualifications

- | |
|--|
| <ul style="list-style-type: none">▪ Engineering Graduate |
|--|

Functional Skills

- | |
|---|
| <ul style="list-style-type: none">▪ Exposure to AMI Projects in Energy Distribution Utilities |
|---|

Relevant and total years of Experience

- | |
|--|
| <ul style="list-style-type: none">▪ 8+ |
|--|
-